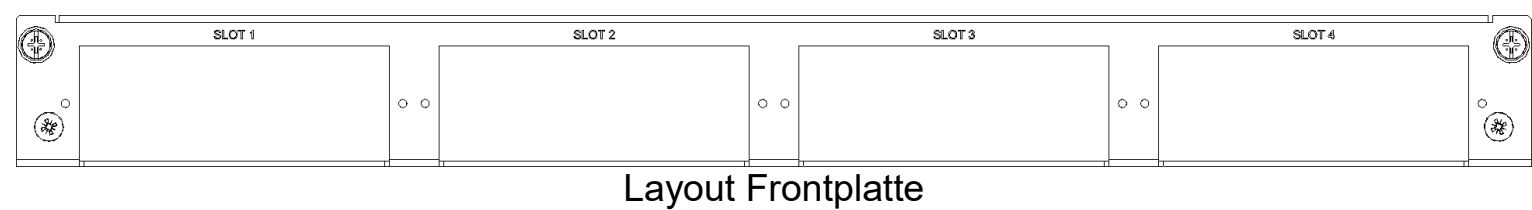
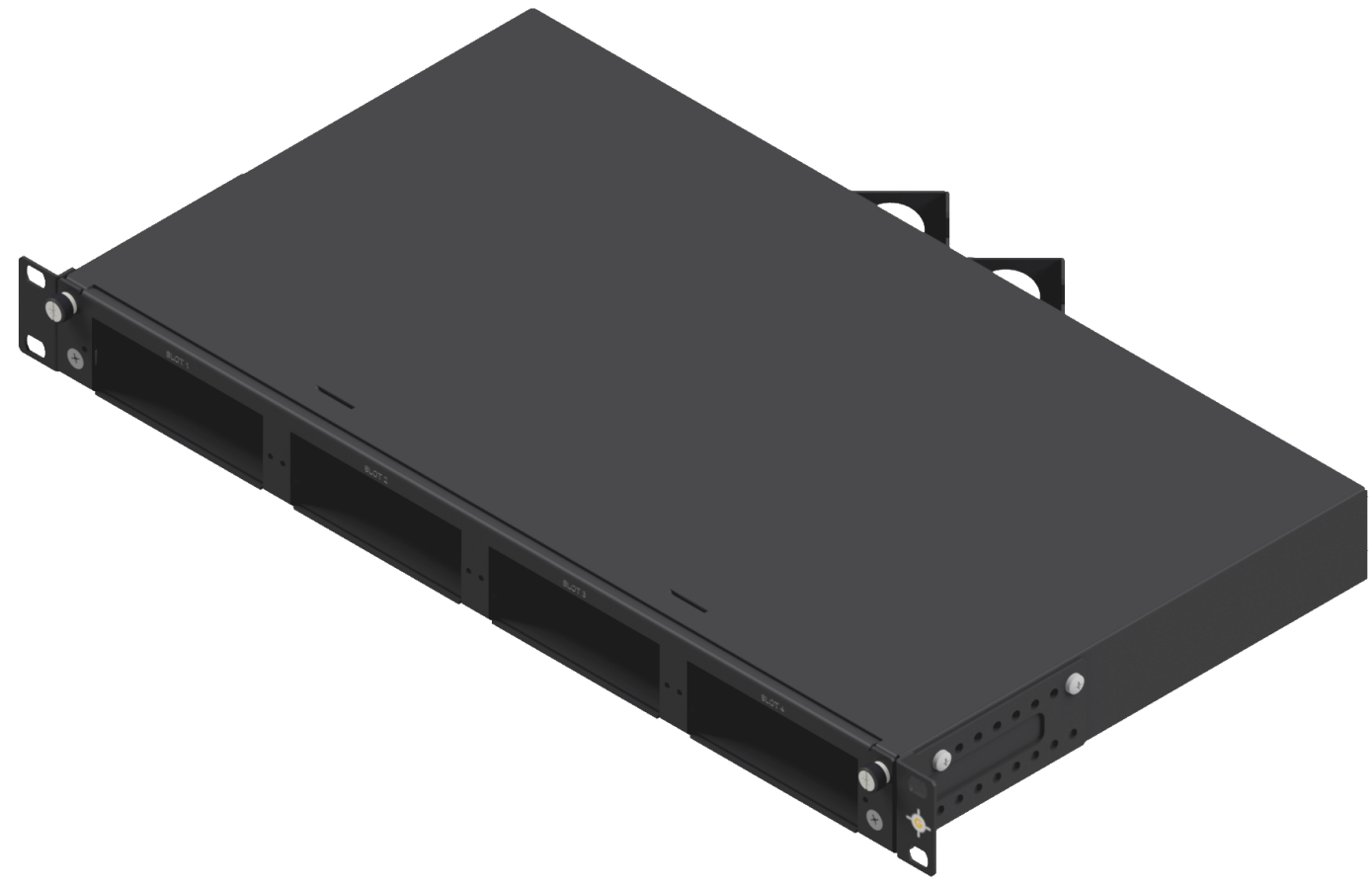


## 19"/1U splice enclosure with drawer and 4-section front panel

### OSIRISONE HD splice enclosure 19"/1RU

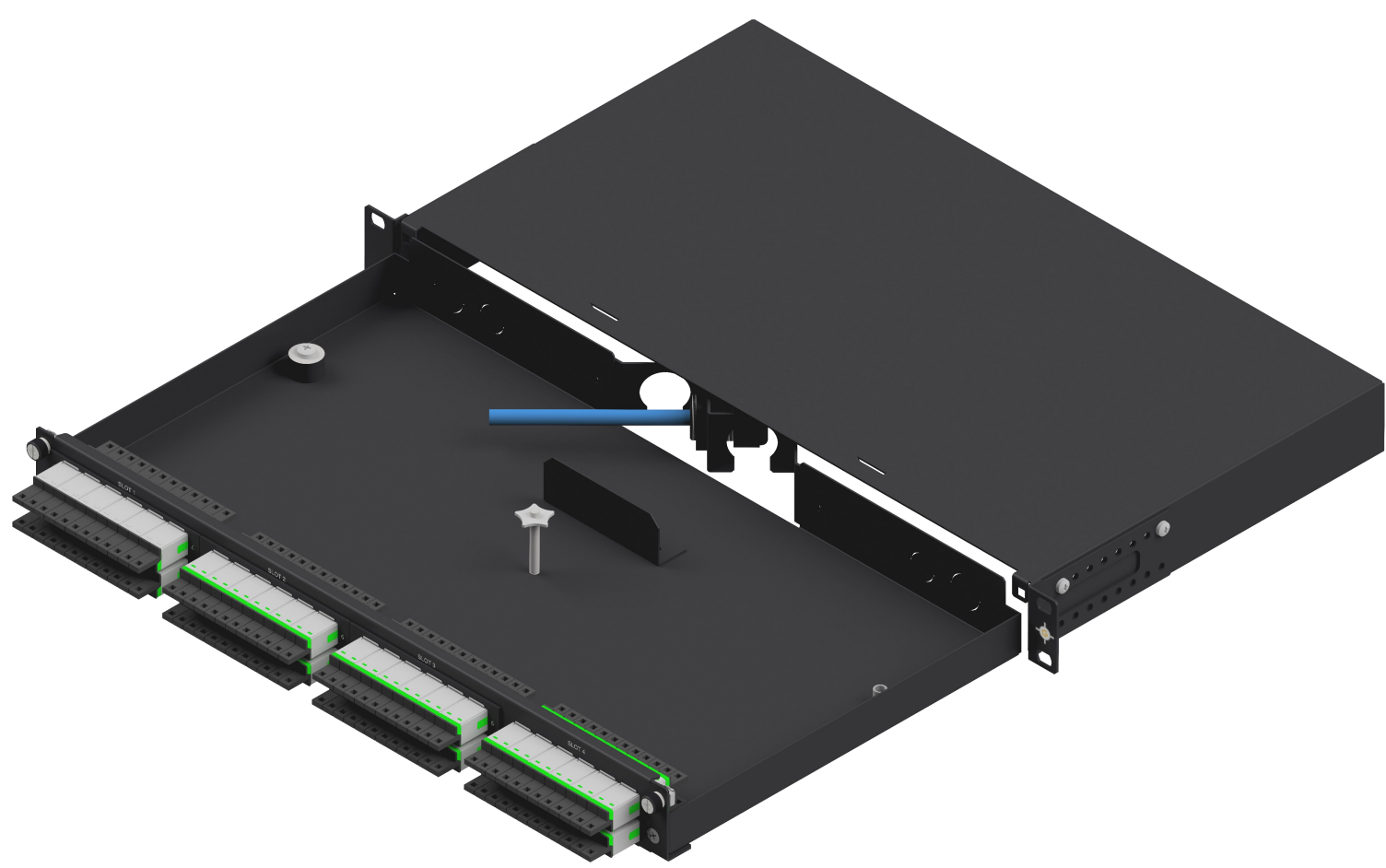
up to 96 fibers in LC and LSH(E2000) connection technology (48 fibers in SC) to accommodate up to 4 OSIRISONE HD TFP splice sets



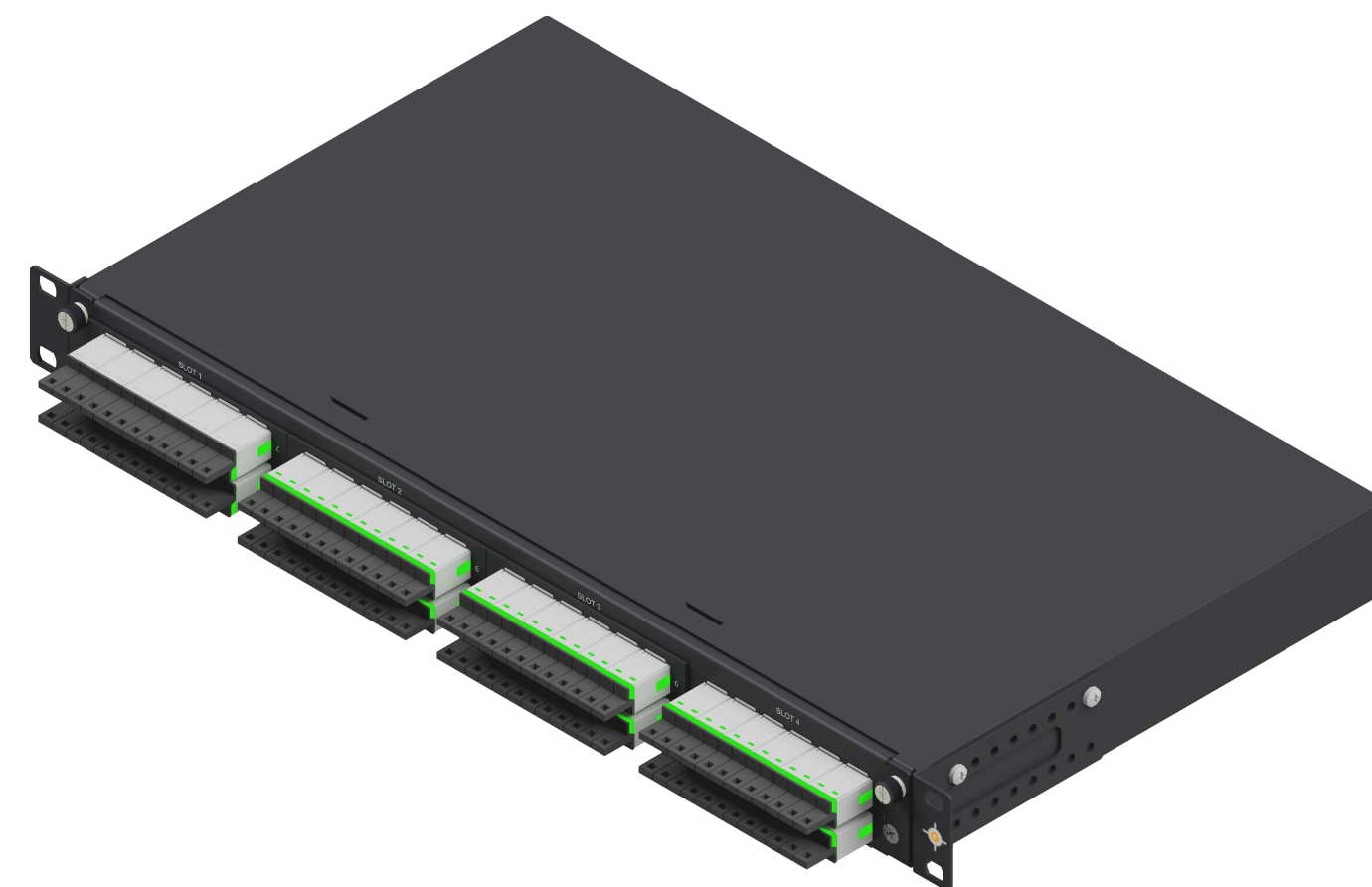
Layout Frontplatte

### Features

- Fastening option for non-metallic strain relief elements for professional strain relief
- Drawer for easy assembly and maintenance
- Cable entries on left and right M16 and M20 respectively (pre-punched)
- Optional angled cable entry for M20 and M25 in the center
- 19" level depth adjustable up to 50mm in 10mm steps
- TFP splice sets prepared ready for splicing at the factory and mounted in splice housings:
  - Couplers mounted (snap-in)
  - Pigtails attached, inserted into splice cassette and set down
  - Incl. splice cassettes, splice holder crimp, crimp splice protector
- In case of partial assembly, slots not required are closed with blanking plates



Drawer view

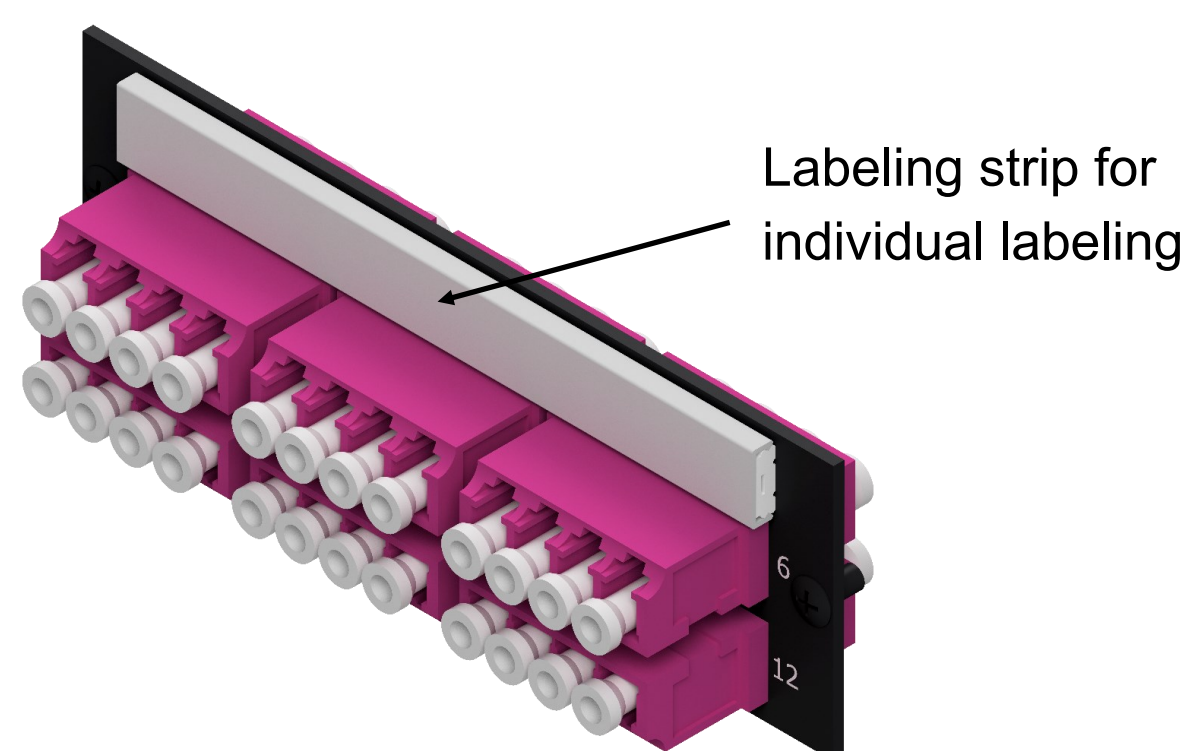


Example equipment

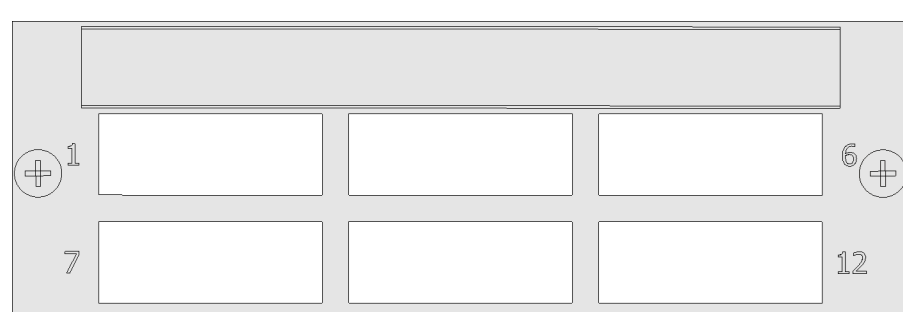
### OSIRISONE TFP splice kit

6xLC-Quad (Snap-In) or 6xSC-Duplex (Snap-In)

Consisting of front panel, couplers, pigtails, splice cassette, splice holder and



Labeling strip for individual labeling

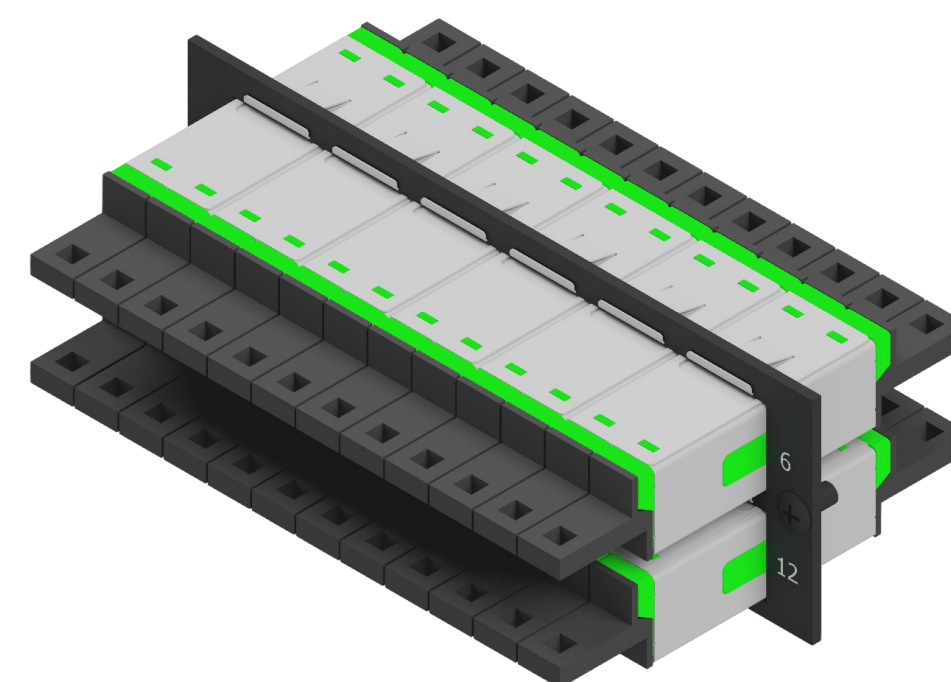


Layout front panel

### OSIRISONE TFP-Spleißset

12xLSH(E2000)-Duplex (Snap-In)

Bestehend aus Frontplatte, Kupplungen, Pigtails, Spleißkassette, Spleißhalter und Krimpspleißschutz



Layout front panel

All housings are assembled in the factory at the production site in Irschenberg/Upper Bavaria, ready for assembly according to customer specifications, and quality assured.

## AVAILABILITY AHEAD